



www.zyxel.com/green

- ADSL2+ Internet Access
- UPnP Support
- Zero Configuration

Compact, Flexible, Easy to Install

Benefits

Higher-speed Internet Access

ZyXEL's P-660R Compact Series router complies with ADSL worldwide standards. With speeds of up to 24Mbps (ADSL 2+), the P-660R Compact Series offers the fastest throughput rates available in an ADSL2+ enabled router. Users can enjoy not only high-speed ADSL services, but also broadband multimedia applications such as interactive gaming, video streaming, and real-time audio much easier than before.

UPnP Support

The P-660R Compact Series supports UPnP discovery and UPnP NAT traversal. Using the standard TCP/IP protocol, the P-660R Compact Series can join a network, obtain an IP address, convey its capabilities, and learn about other devices on the network.

Zero Configuration Support

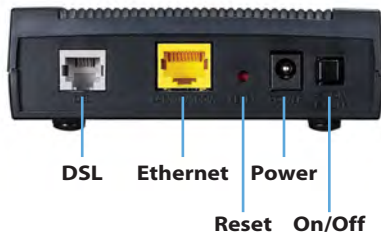
Thanks to ZyXEL's exclusive Zero Configuration technology, the quick and easy installation aid allows users to hook up a DSL connection in minutes.

Compact Size

The P-660R Compact Series benefits from its smaller size. It's compact, flexible, easy to install. It's cooler in both operation and appearance.

P-660R Compact Series
ADSL2+ Router





P-660R Compact Series ADSL2+ Router

Specifications

ADSL Compliance

- RADSL (ANSI T1.413 Issue 2)
- G.dmt ADSL over POTS (G.992.1 Annex A)
- G.dmt ADSL over ISDN (G.992.1 Annex B and U-R2)
- G.hs (G.994.1)
- Auto-negotiating rate adaptation
- ADSL2 G.dmt.bis(G.992.3)
- ADSL2+ (G.992.5)
- Reach Extended ADSL(RE ADSL)
- Annex M

ATM Support

- Support for up to 8 PVCs
- RFC 1483/2684 Multiple Protocol over AAL5
- VC and LLC Multiplexing
- Traffic Shaping UBR,CBR,VBR-nrt
- ATM Forum UNI 3.1/4.0 PVC
- ITU-T 1.610 F4/F5 OAM

PPP Support

- PPP (RFC 1661)
- PPP over AAL5 (RFC 2364)
- PPP over Ethernet (RFC 2516)
- PAP Authentication (RFC 1334)
- CHAP Authentication (RFC 1994)

Routing/Bridge Support

- IEEE 802.1d Transparent Bridging
- 802.1q Pass-through Bridge
- Up to 256 MAC Learning Address
- IP Routing: TCP, UDP, ICMP, ARP
- RIPv1 and RIPv2
- Static Route
- IP Multicast IGMP v1/v2

IP Management

- SUA (Single User Account)
- Multi-NAT (Network Address Translation)
- Multimedia Support
- VoIP SIP Pass-through
- VPN (IPSec,PPTP,L2TP Pass-through)
- DHCP Server/Relay/Client
- IP Alias
- DNS Proxy
- Dynamic DNS
- UPnP Support

Network Management

- TR-069
- Web-based Configuration
- Command-line Interpreter(CLI)
- Telnet Remote Management
- SNMP MIB Support
- FTP/TFTP firmware upgrade and configuration backup/restore
- Built-in Diagnostic Tool

Security

- Password-protected System Management Terminal
- PAP (Password Authentication Protocol)
- CHAP (Challenge Handshake Authentication Protocol)
- Microsoft CHAP
- IP Packet Filtering for Access Control

Advanced

- Traffic Redirect
- Zero Configuration

Hardware Specification

- ADSL: One RJ-11 or RJ-45
- LAN: One Ethernet port, 10/100M Auto MDI/MDIX
- Reset Button
- Status LEDs Indicator: POWER, ETHERNET, DSL, INTERNET
- Power: 9V

Physical Specifications

- Dimensions: 4.3 (W) x 4.2 (D) x 1.4 (H) inches
- Weight: 5.7oz

Environmental Specifications

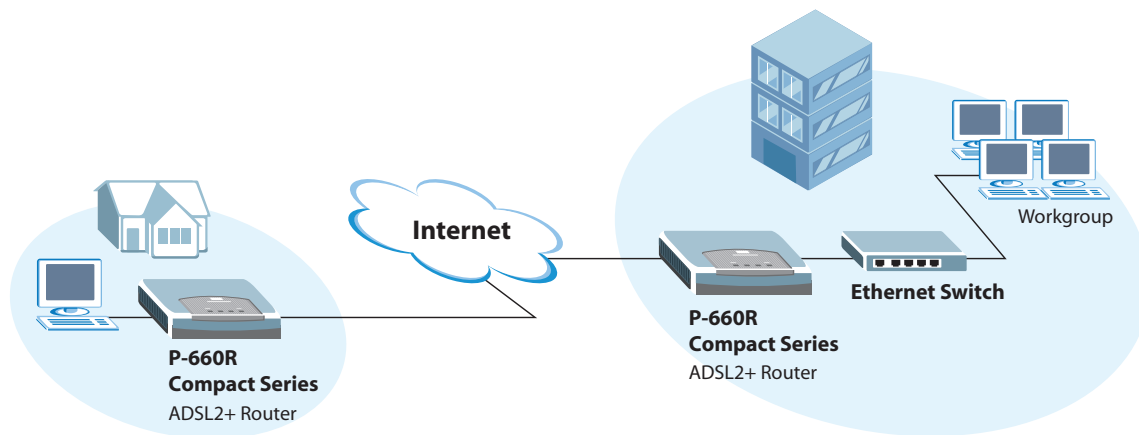
Operating environment:

- Temperature: 32°F to 104°F
- Humidity: 20% to 85%

Storage environment:

- Temperature: -4°F to 140°F
- Humidity: 20% to 90%

Application Diagram



For more product information, visit us on the web at www.ZyXEL.com



Copyright © 2012 ZyXEL Communications Corp. All rights reserved. ZyXEL, ZyXEL logo are registered trademarks of ZyXEL Communications Corp. All other brands, product names, or trademarks mentioned are the property of their respective owners. All specifications are subject to change without notice.