



- Dual-management mode allows for standalone configuration or CloudCommand service with concurrent multi-AP management.

- In standalone mode: perfect for small networks

- 802.11b/g/n standards
- 802.3af PoE
- Multiple SSIDs
- Certified WPA/WPA2 delivers strict network protection
- IEEE 802.11az Energy Efficient Ethernet and WMM Power Saving features are environmentally friendly

- In CloudCommand mode: makes deploying and managing larger networks easy and efficient

- Concurrent, remote configuration of multiple APs
- Simplified deployment via self configuration
- Enhanced security with WPA2-IDA
- Firewallled guest Internet access
- Multi-location roaming
- Performance reporting and alerting

802.11 b/g/n

CloudEnabled™
PoE Access Point

NWA1100N-CE

Business-Grade Wireless N Performance, Group Management, Enhanced Security at Breakthrough Affordability

The CloudEnabled™ ZyXEL Dual-Management NWA1100N-CE Access Point is an innovative Wi-Fi solution that blends performance and business-grade management capabilities with low cost and simple operation.

As the world's first Access Point (AP) with dual-management capabilities, the unit can be individually configured via local user interface or group managed via the CloudCommand™ online controller, which provides business-grade management features and delivers everything needed to deploy, configure, secure and administer wireless networks.

Experiencing the benefits of CloudCommand is risk free with included 30-day trial*.

Powerful, State-of-the-Art Hardware

The NWA1100N-CE delivers 802.11n connectivity, MIMO technology, PoE and multiple SSIDs. It is WiFi-certified for enterprise-class security and IEEE interoperability and is the ideal choice to establish an easy-to-use wireless network in any workplace.

The NWA1100N-CE empowers businesses and MSPs that service them with the dual management feature of operating APs in traditional standalone mode for small deployments, or leveraging the CloudCommand virtual controller for larger deployments in one or more locations.

Choose Standalone Mode or CloudCommand Virtual Controller

In standalone mode, the NWA1100N-CE performs as a traditional, locally configurable AP that provides robust, inexpensive connectivity and cutting-edge features such as 802.11n, PoE and multiple SSIDs. It can operate in access point, repeater, bridge or client modes, offering the flexibility of deployment for all possible usage scenarios.

In CloudCommand mode, the NWA1100N-CE transforms into a powerful cloud-managed networking solution that delivers an unbeatable combination of business features and unprecedented affordability. Remote management, zero-configuration deployment, enhanced security and real-time network monitoring empower businesses to operate enterprise-level Wi-Fi environments – for a small fraction of traditional enterprise costs.

*Annual subscription is required after 30 days. Product number CC1YNWA1100N-CE.



Turnkey, Budget-Conscious Solution for Your Growing Wireless Connectivity Needs

Affordably bring your businesses into the wireless age

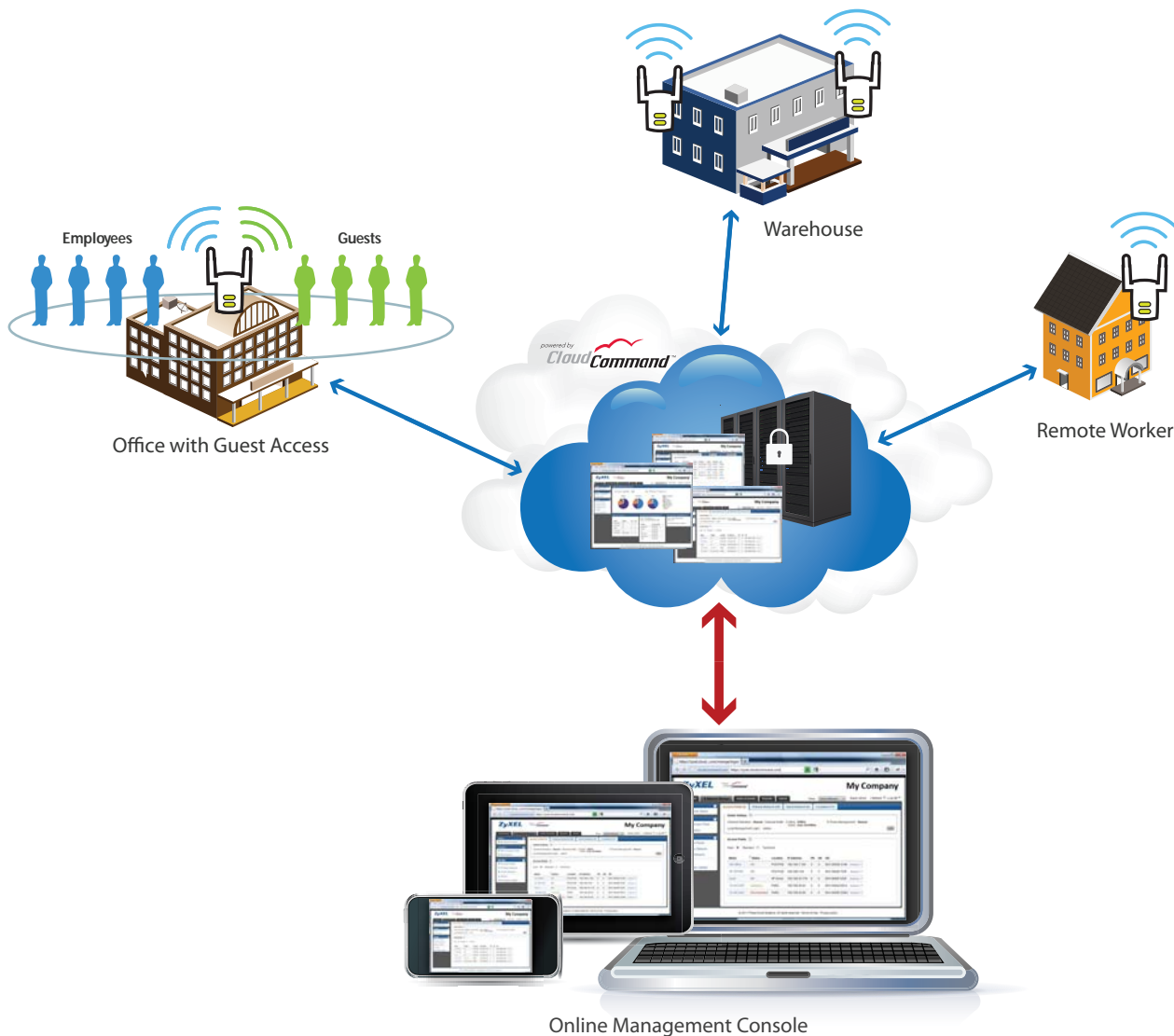
The NWA1100N-CE in CloudCommand mode offers the most secure, fastest to deploy and easiest to manage business Wi-Fi in the market – at the lowest cost – making it perfect for businesses in retail, health care, hospitality, education and professional services with:

- 10+ computers, tablets or smartphones
- Facilities larger than 4,000sf. or multiple buildings

Enterprise functionality without the cost or complexity

The NWA1100N-CE is ideal for companies seeking:

- An 802.11n network with high-speed connectivity
- Complete Wi-Fi coverage in 1 or more locations
- The highest level of security
- A separate, secure guest network for Internet access
- A budget-conscious solution



Virtual Controller: Enterprise Features without Cost and Complexity



CloudCommand virtual controller provides complete centralized management while eliminating the cost and complexity of traditional on-site wireless controllers. From any browser, the CloudCommand virtual controller seamlessly manages Wi-Fi deployments of any size, in one or more locations, with plug-and-connect simplicity, enhanced security, network-wide monitoring, automated firmware updates and more.

Plug and connect simplicity

Add Access Points to your deployment with a few clicks, and then just plug them into your network. No configuration required, and they are ready to go. No training or specialized IT skills needed.

Straightforward, powerful interface

With a simple, yet fully featured browser-based user interface, the NWA1100N-CE self-configures in moments.

Single point of management

One user interface gives you anytime, anywhere access to all your wireless networks across one or more locations. Smart logins allow you to delegate third-party administrators to manage Cloud networks through the cloud.

WPA2+IDA™ enhanced security

Individual Device Authentication (IDA™) delivers enhanced, two-factor security with simplified access to provide extra network protection.

Guest Internet network

A separate, secure, firewalled network delivers flexible, Internet-only connectivity for guests.

Active alerts

Customizable real-time SMS/email alerts notify administrators about network issues.

Advanced graphic reporting

Rich reporting and graphs provide network insights for effective optimization.

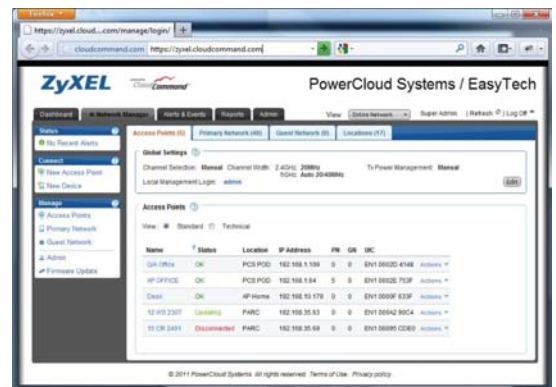
Automated firmware updates

Firmware updates can be remotely executed in real time or scheduled across the entire network, ensuring the Access Points are always up to date.

Experiencing the benefits of CloudCommand is risk free with the included 30-day trial. Annual subscription (product number "CC1YNWA1100N-CE") is required after 30 days.



CloudCommand Dashboard



Network Manager



Performance and Usage Reporting



NWA1100N-CE
802.11 b/g/n
CloudEnabled™
PoE Access Point

Specifications

| Model | Local Management Mode | CloudCommand mode |
|--|--|--|
| Product Name | c | 802.11 b/g/n PoE CloudEnabled AP c |
| Main Design | | |
| Wireless Frequency | 2.4 GHz | |
| Radio | 1 | |
| Number of Antenna | 2T2R MIMO | |
| Frequency Band | 2.4 GHz Bands USA: 2.412 to 2.462 GHz; ETSI: 2.412 to 2.472 GHz; Taiwan: 2.412 to 2.462 GHz | |
| Firmware Update | Local | Remote, scheduled, network-wide |
| Maximum Output Power* | | |
| 11b/g/n | USA | 20 dBm |
| | Worldwide | 16 dBm |
| LAN & WAN | | |
| Number of 10/100/1000M LAN | 1 | |
| 802.3af PoE | Yes (10W draw) | |
| WLAN Features | | |
| WLAN Maximum Net Throughput | Up to 110 Mbps | |
| WMM (Wi-Fi Certified) | Yes | |
| SSIDs | 4 | 2 (self-configuring) |
| Security | WEP, WPA/WPA2-PSK, WPA/WAP2 Enterprise | WPA2-PSK, WAP2 Enterprise, WPA2+IDA |
| Guest Network | Manual configuration | Auto-configured w/ firewall, client isolation & captive portal |
| WLAN Access Control List | Yes | Yes (IDA™) |
| EAP-TLS, TTLS, PEAP, SIM | Yes | Yes |
| Site Survey | Scanning | Scanning and reporting |
| Security | | |
| IEEE 802.1x | Yes | Yes |
| MAC Filtering | Yes | Yes (IDA™) |
| RADIUS Authentication | Yes | Yes |
| Network | | |
| VLANs | Yes | Yes |
| DHCP Client | Yes | Yes |
| QoS | | |
| WMM | Yes | Yes |
| WLAN Management | | |
| Standalone AP Mode | Yes | Yes |
| Management | SNMP + CLI with SSH | Remote Management with CloudCommand™ |
| Group Configuration | No | Yes |
| Self-configuration | No | Zero-touch, plug and connect |
| Reporting | Log | Graphic & searchable: usage, performance, logs |
| Alerting | Passive | Active, via SMS & Email |
| Standard Compliance | | |
| Ethernet | IEEE 802.3, IEEE 802.3u, IEEE 802.3az, IEEE 802.3af | |
| PoE | IEEE 802.3af | |
| Radio Modulation Type | 802.11b: DBQSK, DQPSK, CCK 802.11g: BQSK, QPSK, 16-QAM, 64-QAM 802.11n: BQSK, QPSK, 16-QAM, 64-QAM | |
| WLAN Compliance | | |
| Radio | FCC Part 15C 15.247, ETSI EN 300 328, DGT LP0002 | |
| EMC | FCC Part 15/107, EN 301 489-17 V1.2.1: 08-2002, EN 301 489-1 V1.5.1:11-2004 | |
| Safety | EN 60950-1, IEC 60950-1 | |
| Environmental Specifications | | |
| Operating Temperature | 0°C to 50°C/32°F to 122°F | |
| Operating Humidity | 20% to 95% (non-condensing) | |
| Storage Temperature | -30°C to 60°C/-22°F to 140°F | |
| Storage Humidity | 10% to 90% | |
| Physical Specifications | | |
| Item Dimensions (WxDxH)(mm)(in.) | 152 x 92 x 45 (5.98" x 3.62" x 1.77") | |
| Item Weight (g/lb.) | 200/0.44 | |
| Packing Dimensions (WxDxH)(mm)(in.) | 275 x 147 x 100 (10.82" x 5.79" x 3.94") | |
| Packing Weight (g/lb.) | 770/1.70 | |

For more product information, visit us on the web www.us.ZyXEL.com

ZyXEL Communications Inc.
 1130 North Miller Street
 Anaheim, CA 92806-2001

Phone: (714) 632-0882
 Fax: (714) 632-0858
 e-mail: sales@zyxel.com



Copyright © 2011 ZyXEL Communications Corp. All rights reserved. ZyXEL, ZyXEL logo are registered trademarks of ZyXEL Communications Corp. All other brands, product names, or trademarks mentioned are the property of their respective owners. All specifications are subject to change without notice. IDA™ (Individual Device Authentication) and CloudCommand™ are trademarks of PowerCloud Systems